

ZOOMLION

TELESCOPIC BOOM LIFT

ZT82J

Comply with CE Standard



HIGHLIGHTS

- ▶ World's tallest self-propelled telescopic boom lift, with a working height of up to 82.3 meters
- ▶ Polygonal innovative boom, boom weight reduced by more than 10%, vertical stiffness increased by 25%, torsion resistance increased by 20%, and offers small deformation and stable control
- ▶ Double lifting cylinder layout provides more smooth lifting, better boom rigidity and less platform shakes
- ▶ X outrigger offers larger working envelope, stronger off-road ability, and better stability
- ▶ Four-wheel steering with intelligent control ensures coordinated movements of the outriggers during travel, steering, and extension. Automatic matching of all-wheel steering angles guarantees straight-line travel
- ▶ Dual-stage telescopic system for efficient and smooth operation

FEATURES

Standard Features

Horn
Proportional control
All motion alarm
Flashing beacon
Self-closing entry gate
Emergency descent system
Emergency stop button
Auto-leveling system
On-board diagnostic system
Tilt protection system
Oscillating axle
Load sensing system
4.3' Led display
Swing-out engine tray
Anemograph

Accessories & Options

- ▶ Platform work light
- ▶ Anti-collision device
- ▶ AC power to platform

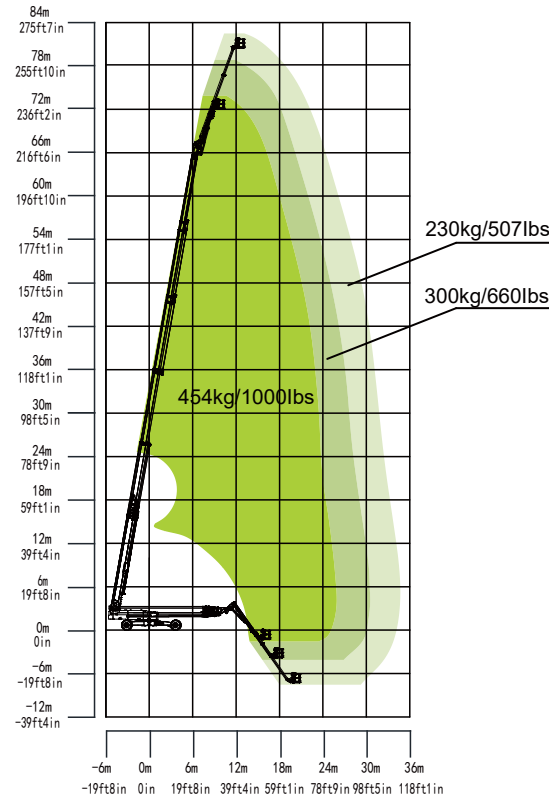
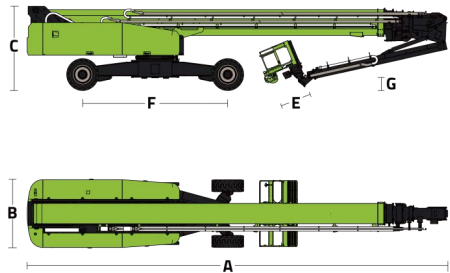
ACCESS WITH ZOOMLION GREEN

Phone: 0086(731)-88353680 0086(731)-88250971
E-mail: awp@zoomlion.com

Add: 701 Xulong Nan Lu, Xiangjiang New District, Changsha Hunan, China
Web: www.zoomlion-access.com

ZOOMLION

Model	ZT82J	
	Metric	Imperial
Size		
Work Height	82.30m	270ft
Platform Height	80.30m	263ft 5in
Horizontal Outreach	35.90m	11ft 9in
A - Stowed Length	17.50m	57ft 5in
B - Stowed Width	2.80m	9ft 2in
C - Stowed Height	3.27m	10ft 8in
D - Platform Length	2.44m	8ft
E - Platform Width	0.91m	3ft
F - Wheelbase	6.26/7.25m	20ft 6in/23ft 9in
G - Ground Clearance	0.50m	1ft 8in
Performance		
Platform Capacity (Unrestricted/Restricted)	230/300/454kg	510/660/1000lb
Drive Speed (Stowed)	4km/h	
Gradeability	35% (19°)	
Turning Radius (Inside)	11.17/3.41m	36ft 8in/11ft 2in
Turning Radius (Outside)	13.91/9.05m	45ft 8in/29ft 8in
Turntable Swing	360° continuous	
Platform Rotation	±90°	
Tail Swing	2.35m	7ft 8in
Jib (Range of Articulation)	125° (- 55°~70°)	
Max. Wind Speed	12.5m/s	28mph
Power		
Engine	Cummins F4.5	
Fuel Tank Capacity	200L	52.8 us gal
Control Voltage	12V DC	
Hydraulic Tank Capacity	740L	195 us gal
Drive Mode	4WD	
Steering Mode	4WS/Front wheel/Crab	
Tire		
Type	Foam-filled Tires	
Weight		
Gross	48800kg	107585lbs



ZOOMLION ACCESS reserves the right to make specification and/or equipment changes without prior notification.
Product specifications are updated to May, 2025.