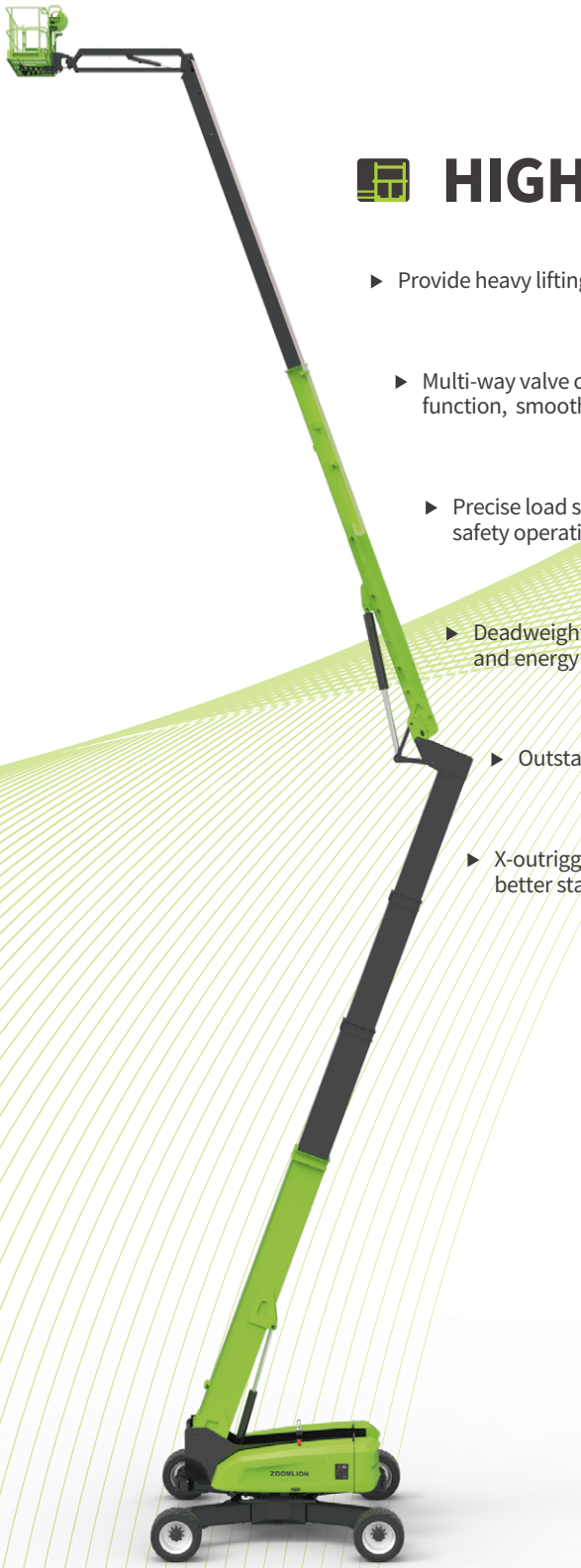


ZOOMLION

ARTICULATING BOOM LIFT

ZA42J

Comply with CE Standard



HIGHLIGHTS

- ▶ Provide heavy lifting of 275kg/454kg load
- ▶ Multi-way valve control, pressure compensation function, smooth and accurate control
- ▶ Precise load sensing system to improve overload safety operations
- ▶ Deadweight Lowering System for smooth operation and energy efficiency
- ▶ Outstanding below ground reach of 5.5m
- ▶ X-outrigger for larger work range and better stability

FEATURES

Standard Features

Horn
Proportional control
Flashing beacon
Self-closing entry gate
Emergency descent system
Emergency stop button
Auto-leveling system
On-board diagnostic system
Over tilt protection system
Load sensing system
4.3' LED display
Extended axle
Swing-out engine tray
Anti-crusing device
4WS

Accessories & Options

- ▶ Platform work lights
- ▶ AC power to platform
- ▶ 8kw Hydraulic generator
- ▶ GPS
- ▶ Platform mesh to Mid or Top rail
- ▶ Fall Arrest, Rear Entry
- ▶ Storage Tray
- ▶ Welder Ready Package
- ▶ White Noise Alarm

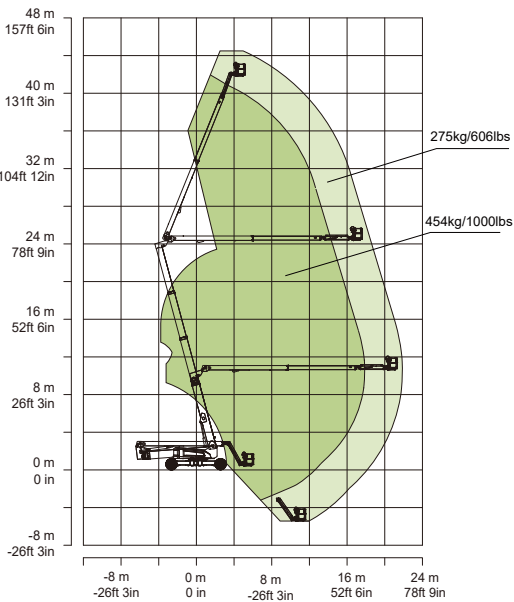
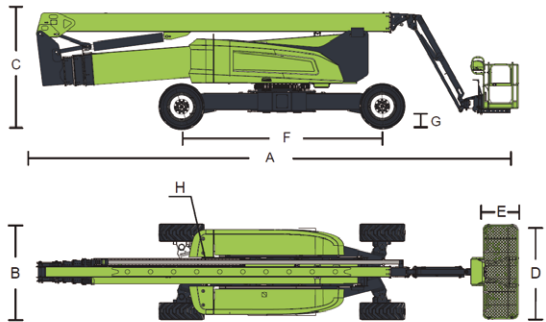
ACCESS WITH ZOOMLION GREEN

Phone: 0086(731)-88353680 0086(731)-88250971
E-mail: awp@zoomlion.com

Add: 701 Xulong Nan Lu, Xiangjiang New District, Changsha Hunan, China
Web: www.zoomlion-access.com

ZOOMLION

Model	ZA42J	
	Imperial	Metric
Size		
Work Height	144ft 5in	44.03m
Platform Height	137ft 11in	42.03m
Horizontal Outreach	71ft 10in	21.9m
Up and Over Height	80ft 5in	24.5m
A - Stowed Length	41ft 4in	12.6m
B - Stowed Width	8ft 2in	2.49m
C - Stowed Height	10ft 2in	3.1m
D - Platform Length	8ft	2.44m
E - Platform Width	3ft	0.91m
F - Wheelbase	13ft 5in	4.1m
G - Ground Clearance	1ft 4in	0.42m
Performance		
Platform Capacity	610/1000lb	275kg/454kg
Drive Speed	3.23 mph	5.2km/h
Gradeability	45%	
Axles Oscillation	0	
Turning Radius (Inside)	/	
Turning Radius (Outside)	31ft 2in/22ft	9.5/6.7m
Turntable Swing	360° continuous	
Platform Rotation	±90°	
H-Tail Swing	2ft 7in	0.8
Max. Working Slope	5°	
Max. Wind Speed	28mph	12.5m/s
Power		
Diesel Engine	Kubota V2607-CR-TI-EW02 Kubota V3307-DI-T-MAR1-ET02	
Fuel Tank Capacity	44.9 (us gal)	170L
Auxiliary Power	12V	
Control Voltage	12V	
Hydraulic System Capacity	92.5 (us gal)	350L
Hydraulic Tank Capacity	66 (us gal)	250L
Tire		
Type	445/50D710 Foam-filled Tires	
Weight		
Gross	51147lb	23200kg



Range of Motion ZA42J

ZOOMLION ACCESS reserves the right to make specification and/or equipment changes without prior notification.
Product specifications are updated to May, 2025.